

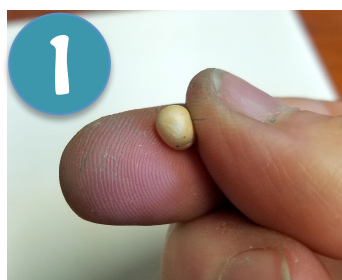


Polymer Clay Jewelry:
Mixed Media
with Christi Friesen

TURTLE RIPPLE RING



Love resin for its water-like effects? This Turtle Ripple Ring is perfect for you!



Making the Turtle

1. Prepare two colors, a tan shell color and a green for the body. Flatten a tiny ball of tan for the bottom shell.
2. With green clay, create the croissant-shaped front flippers, smaller back legs, a tail, and a head.
3. Use a tool to add tiny specks of black clay for eyes.
4. Add the green limbs to the bottom shell. Then add a flattened ball of tan clay for the top shell.
5. Brush on some powders to create shading.
6. Add some decorative clay to accent the shell. Bake it!



Adding the Resin

7. Mix up the two-part resin thoroughly. Use a clothespin to hold the ring blank upright. Place the turtle into the ring blank and gently pour the resin around it. Allow the resin cure fully for 24 hours.

