

# Crochet Post Stitches in Lace

Robyn Chachula



Donald Scott

# CROCHET POST STITCHES IN LACE: CREATE TEXTURE, DRAPE, AND STRUCTURE IN YOUR GARMENTS

Robyn Chachula

## POST STITCHES

### WOVEN POST

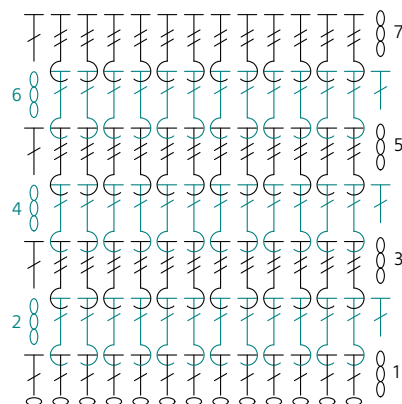
Ch multiple of 2

**Row 1:** Dc in 4th ch from hk, dc in ea ch to end, turn.

**Row 2:** Ch 3 (counts as dc throughout), \*bpdc around next st, fpdc around next st; rep from \* across, dc in top of tch, turn.

**Row 3:** Ch 3, \*fptr around next st, bptr around next st; rep from \* across, dc in top of tch, turn.

Rep Rows 2-3 to desired length.



Woven Post Stitch Diagram

## ADDING POST STITCHES IN LACE

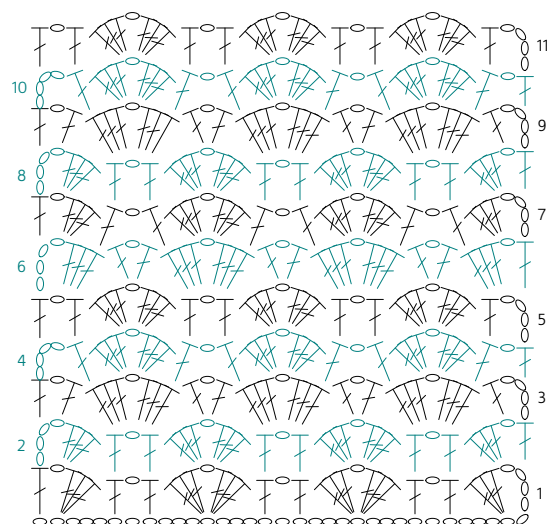
### Key

- chain
- slip stitch
- + single crochet
- ⌈ half double crochet
- ⌋ double crochet
- ⌋ back post double crochet
- ⌋ treble crochet
- ⌋ front post treble crochet
- ⌋ double treble



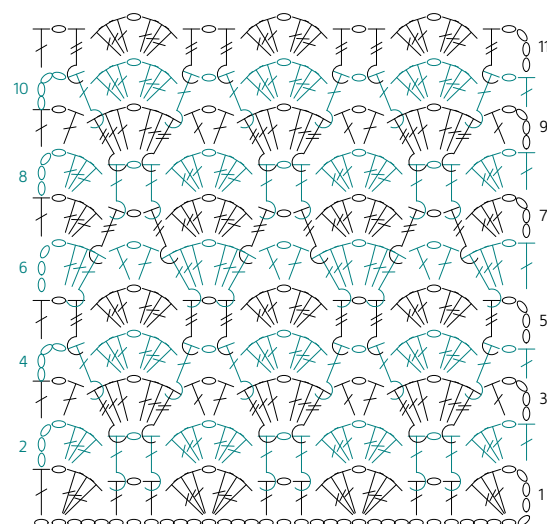
Foxglove

### GINGERBREAD STITCH PATTERN



Gingerbread Stitch Diagram

### FOXGLOVE STITCH PATTERN



Foxglove Stitch Diagram

## FOXGLOVE STITCH PATTERN

Pattern for Foxglove Wrap is available at [InterweaveStore.com](http://InterweaveStore.com)

### Abbreviations:

**Back Post Treble Crochet (BPtr)** Yarn over twice, insert hook from back to front to back around the post of the stitch indicated, yarn over and pull up a loop, [yarn over and pull through 2 loops on hook] three times

**Front Post Double Crochet (FPdc)** Yarn over, insert hook from front to back to front around the post of the stitch indicated, yarn over and pull up a loop, [yarn over and pull through 2 loops on hook] twice

Ch multiple of 10 plus 7

**Row 1 (WS):** 3 dc in 6th ch from hook (half shell made), \*sk 3 ch, dc in next ch, ch 1, sk 1 ch, dc in next ch, sk 3 ch\*\*, (3 dc, ch 1, 3 dc) in next ch (shell (sh) made); rep from \* across ending at \*\*, 3 dc in next ch, ch 1, dc in last ch, (half shell made) turn. (2 shells + 2 half shells on swatch)

**Row 2:** Ch 4 (counts as dc, ch-1 sp throughout), 3 dc in ch-1 sp, \*sk 3 dc, FPdc around next dc, ch 1, FPdc around next dc\*\*, sh in next ch-1 sp; rep from \* across ending at \*\*, 3 dc around 5th ch of tch, ch 1, dc in 4th ch of tch, turn.

**Row 3:** Ch 4, dc in ch-1 sp, \*sk 3 dc, BPtr around next dc, (2 dc, ch 1, 2 dc) in next ch-1 sp, BPtr around next dc, (dc, ch 1, dc) in next ch-1 sp; rep from \* across, turn.

**Row 4:** Ch 4, \*sk 2 dc, FPdc around next tr, sh in next ch-1 sp, sk 2 dc, FPdc around next tr, ch 1; rep from \* across to tch, dc in 3rd ch of tch, turn.

**Row 5:** Ch 4, sk first dc, BPtr around next dc, \*sh in next ch-1 sp, sk 3 dc, BPtr around next dc, ch 1\*\*, BPtr around next dc; rep from \* across ending at dc in 3rd ch of tch, turn.

**Row 6:** Ch 4, 2 dc in ch-1 sp, FPdc around next tr, \*(dc, ch 1, dc) in next ch-1 sp, sk 3 dc, FPdc around next tr\*\*, (2 dc, ch 1, 2 dc) in next ch-1 sp, FPdc around next tr; rep from \* across ending at \*\*, 2 dc around 4th ch of tch, ch 1, dc in 3rd ch of tch, turn.

**Row 7:** Ch 4, 3 dc in ch-1 sp, \*sk 2 dc, BPtr around next dc, ch 1, sk 2 dc, BPtr around next dc\*\*, sh in next ch-1 sp; rep from \* across ending at \*\*, 3 dc around 4th ch of tch, ch 1, dc in 3rd ch of tch, turn.

Foxglove Wrap



Foxglove Wrap Sample

## GOING BEYOND

### INNSBROOK TUNIC

Pattern can be downloaded for free at [Berroco.com](http://Berroco.com)

### Abbreviations:

**Front Post Treble Crochet (FPtr)** Yarn over twice, insert hook from front to back to front around the post of the stitch indicated, yarn over and pull up a loop, [yarn over and pull through 2 loops on hook] three times

**Back Post Double Crochet (BPdc)** Yarn over, insert hook from back to front to back around the post of the stitch indicated, yarn over and pull up a loop, [yarn over and pull through 2 loops on hook] twice

**FP/ BP dc2tog** (double crochet 2 together either with front post, back post, or regular stitches) \*yo, insert the hook around the post of the next indicated stitch (for FP or BP) or into next st (for dc2tog), yo and draw up a loop, yo and draw through two loops on the hook, rep from \* one more time, yo and draw through the remaining loops on the hook.

**Dc arch point** (decrease at top of arch motif in a dc row) \*yo, insert the hook around the post of the next indicated stitch from back to front to back, yo and draw up a loop, yo and draw through two loops on the hook\*\*, rep from \* one more time, yo, insert hook into next st, yo and draw up a loop, yo and draw through 2 loops on the hook, rep from \* twice more to \*\*, yo and draw through the remaining loops on the hook.

**Tr arch point** (decrease at top of arch motif in a tr row) \*Yo twice, insert the hook around the post of the next indicated stitch from front to back to front, yo and draw up a loop, [yo and draw through two loops on the hook] twice, \*\*yo, insert the hook around the post of the next indicated stitch from front to back to front, yo and draw up a loop, yo and draw through two loops on the hook, yo and draw up a loop, yo and draw through two loops on the hook, rep from \*\* to \*\*, rep from \* to \*, yo and draw through the remaining loops on the hook.

**Lf tr dec** (left slanting decrease in a tr row with one leg a front post) Yo, insert hook into next st, yo and draw up a loop, yo and draw through 2 loops on the hook, yo twice, insert the hook around the post of the next indicated stitch from front to back to front, yo and draw up a loop, [yo and draw through two loops on the hook] twice, yo and draw through the remaining loops on the hook.

**Rt tr dec** (right slanting decrease in a tr row with one leg a front post) Yo twice, insert the hook around the post of the next indicated stitch from front to back to front, yo and draw up a loop, [yo and draw through two loops on the hook] twice, yo, insert hook into next st, yo and draw up a loop, yo and draw through 2 loops on the hook, yo and draw through the remaining loops on the hook.

**Lf dc dec** (left slanting decrease in a dc row with one leg a back post) Yo, insert hook into next st, yo and draw up a loop, yo and draw



through 2 loops on the hook, yo, insert the hook around the post of the next indicated stitch from front to back to front, yo and draw up a loop, yo and draw through two loops on the hook, yo and draw through the remaining loops on the hook.

**Rt dc dec** (right slanting decrease in a dc row with one leg a back post)  
Yo, insert the hook around the post of the next indicated stitch from front to back to front, yo and draw up a loop, yo and draw through two loops on the hook, yo, insert hook into next st, yo and draw up a loop, yo and draw through 2 loops on the hook, yo and draw through the remaining loops on the hook.

Chain a multiple of 14 plus 3.

**Row 1(WS):** Dc2tog in 4th and 5th ch from hook, \*sk 1 ch, dc in next 3 ch, (dc, ch 2, dc, ch 2, dc) in next ch, dc in next 3 ch, sk 1 ch, dc5tog in next 5 ch; rep from \* across to last 12 ch, sk 1 ch, dc in next 3 ch, (dc, ch 2, dc, ch 2, dc) in next ch, dc in next 3 ch, sk 1 ch, dc3tog in last 3 ch, turn.

**Row 2:** Ch 5, sk dc3tog, \*FPtr around next 2 dc, dc in next 2 dc, ch 3, sc in next dc, ch 3, dc in next 2 dc, FPptr around next 2 dc,\*\* ch 1, sk dc5tog; rep from \* across to tch ending at \*\*, dtr in top of tch, turn.

**Row 3:** Ch 5, \*BPdc around next 2 tr, dc in next 2 dc, ch 3, sc in sc, ch 3, dc in next 2 dc, BPdc around next 2 tr,\*\* ch 2, sk ch-1 sp; rep from \* across ending at \*\*, ch 1, tr in top of tch, turn.

**Row 4:** Ch 5, \*FPptr around next 2 dc, dc in next 2 dc, ch 3, sc in next sc, ch 3, dc in next 2 dc, FPptr around next 2 dc,\*\* ch 3, sk ch-2 sp; rep from \* across ending at \*\*, ch 1, tr in 4th ch of tch, turn.

**Row 5:** Ch 6, \*BPdc around next 2 dc, dc in next 2 dc, ch 2, dc in sc, ch 2, dc in next 2 dc, BP around next 2 dc,\*\* ch 4, sk ch-3 sp; rep from \* across ending at \*\*, ch 2, tr in 4th ch of tch, turn.

**Row 6:** Ch 6, \*FPtr around next 2 dc, dc2tog over next 2 dc, ch 1, dc in next dc, ch 1, dc2tog over next 2 dc, FPptr around next 2 dc,\*\* ch 5, sk ch-4 sp; rep from \* across ending at \*\*, ch 2, tr in 4th ch of tch, turn.

**Row 7:** Ch 7, sk ch-2 sp, \*BPdc around next tr, rt dc dec over next tr and dc2tog, dc in dc, lf dc dec over dc2tog and tr, BPdc around next tr,\*\* ch 6, sk ch-5 sp; rep from \* across ending at \*\*, ch 3, tr in 4th ch of tch, turn.

**Row 8:** Ch 5, dc in tr, 3 dc in ch-3 sp, \*tr arch pt over next 5 dc, (4 dc, ch 2, dc, ch 2, 4 dc) in ch-6 sp; rep from \* across to last 5 dc, tr arch pt over next 5 dc, (4 dc, ch 2, dc) in tch-sp, turn.

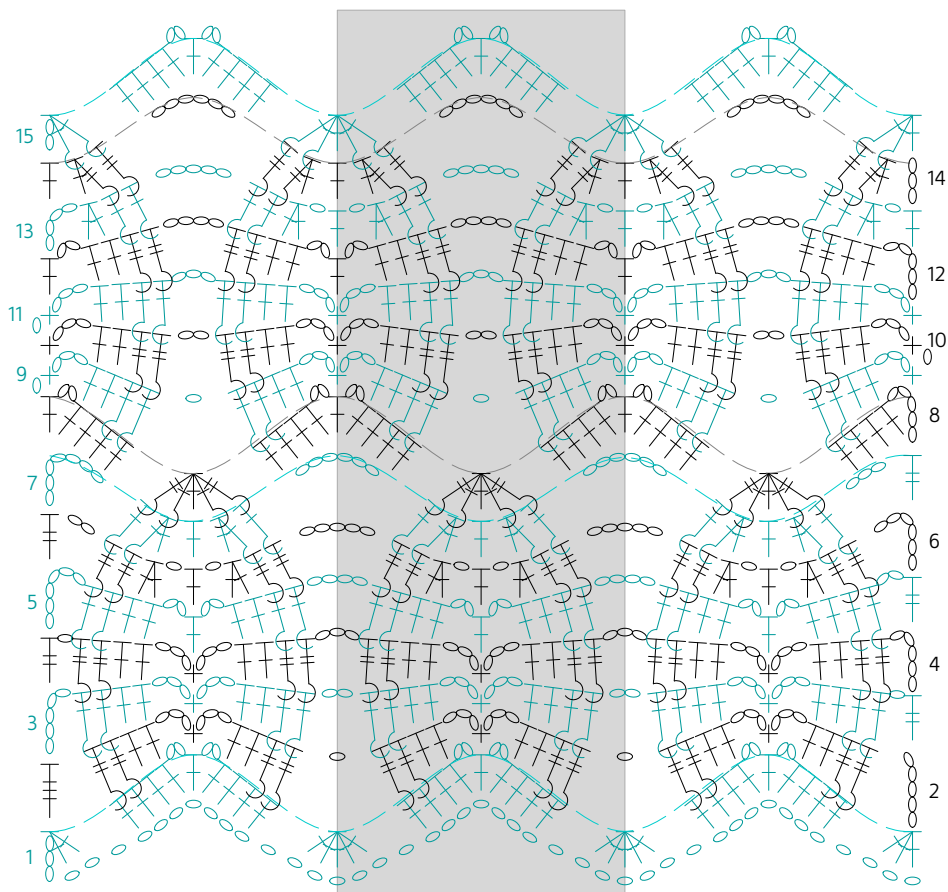
**Row 9:** Ch 1, \*sc in dc, ch 3, dc in next 2 dc, BPdc over next 2 dc, ch 1, sk arch pt, BPdc over next 2 dc, dc in next 2 dc, ch 3; rep from \* across, sc in 3rd ch of tch, turn.

**Row 10:** Ch 1, \*sc in sc, ch 3, dc in next 2 dc, FPptr around next 2 dc, ch 2, sk ch-1 sp, FPptr around next 2 dc, dc in next 2 dc, ch 3; rep from \* across, sc in last sc, turn.

**Row 11:** Ch 1, \*sc in sc, ch 3, dc in next 2 dc, BPdc around next 2 dc, ch 3, sk ch-2 sp, BPdc around next 2 dc, dc in next 2 dc, ch 3; rep from \* across, sc in last sc, turn.

**Row 12:** Ch 5, \*dc in next 2 dc, FPptr around next 2 dc, ch 4, sk ch-3 sp, FPptr around next 2 dc, dc in next 2 dc, ch 2, dc in sc\*\*, ch 2; rep from \* across ending at \*\*, turn.

**Row 13:** Ch 4, \*dc2tog over next 2 dc, BPdc around next 2 dc, ch 5, BPdc around next 2 dc, dc2tog over next 2 dc, ch 1, dc in next dc\*\*, ch 1; rep from \* across ending at \*\* in 3rd ch of tch, turn.



Arch Cables Stitch Pattern

**Row 14:** Ch 3,\*rt tr dec over dc2tog and dc, FPtr around next dc, ch 6, sk ch-5 sp, FPtr around next dc, lf tr dec over next dc and dc2tog, dc in dc; rep from \* across ending in 3rd ch of tch, turn.

**Row 15:** Ch 2, BPdc2tog over next 2 tr, \*(4 dc, ch 2, dc, ch 2, 4 dc) in ch-6 sp, dc arch pt over next 5 sts; rep from \* across to last ch-sp, (4 dc, ch 2, dc, ch 2, 4 dc) in last ch-6 sp, BPdc3tog over last 2 dc and tch, turn.

Rep Rows 2-15 to desired length.

## LISBON SHAWL

Pattern can be downloaded for free at Berroco.com

### Abbreviations:

**Shell** sh ([dc, ch 1] 6 times, dc) in stitch indicated

**Front Post Double Crochet 2 Together** FPdc2tog \*Yarn over, insert the hook around the post of the next indicated stitch by inserting the hook from front to back to front around post, yo and draw up a loop, yo and draw through two loops on the hook, rep from \* one more time, yo and draw through the remaining loops on the hook.

**Back Post Double Crochet 2 Together** BPdc2tog \*Yarn over, insert the hook around the post of the next indicated stitch by inserting the hook from back to front to back around post, yo and draw up a loop, yo and draw through two loops on the hook, rep from \* one more time, yo and draw through the remaining loops on the hook.

Chain a multiple of 16 plus 4.

**Row 1:** 2 Dc in 4th ch from hook, \*ch 1, sk 7 ch, sh in next ch, ch 1, sk 7 ch\*\*, (2dc, ch 1, 2 dc) in next ch; rep from \* across to last ch ending at \*\*, 3 dc in last ch, turn. (2 sh in swatch)

**Row 2:** Ch 4 (counts as tr), FPtr around next 2 dc, \*ch 3, sk 2 ch-1 sps, [sc in next ch-1 sp, ch 3] 4 times, sk 2 ch-1 sps, FPtr around next 2 dc\*\*, ch 2, FPtr around next 2 dc; rep from \* across to tch ending at \*\*, tr in top of tch, turn.

**Row 3:** Ch 1, sc in tr, \*ch 3, BPdc around next 2 tr, sk next ch-3 sp, dc in next ch-3 sp, ch 3, sc in next ch-3 sp, ch 3, dc in next ch-3 sp, BPdc around next 2 tr, ch 3\*\*, sc in ch-2 sp; rep from \* across to tch ending at \*\*, sc in top of tch, turn.

**Row 4:** Ch 5 (counts as tr, ch-1 sp), sc in next ch-3 sp, ch 3, \*FPtr around next 2 dc, sc in next ch-3 sp, ch 3, sc in next ch-3 sp, FPtr around next 2 dc\*\*, [ch 3, sc in next ch-3 sp] twice, ch 3; rep from \* across to last 2 dc ending at \*\*, ch 3, sc in last ch-3 sp, ch 1, tr in last sc, turn.

**Row 5:** Ch 4 (counts as dc, ch-1 sp), sc in ch-1 sp, \*ch 5, BPdc2tog over next 2 tr twice, ch 5, sk next ch-3 sp\*\*, (sc, ch 3, sc) in next ch-3 sp; rep from \* across to tch ending at \*\*, (sc, ch 1, dc) in 4th ch of tch, turn.

**Row 6:** Ch 4 (counts as dc, ch-1 sp), [ch 1, dc] 3 times in ch-1 sp, \*ch 1, (2 dc, ch 1, 2 dc) in sp bet next 2 BPdc2tog, ch 1\*\*, sh in next ch-3 sp, ; rep from \* across to tch, ending at \*\*, (dc, [ch 1, dc] 3 times) in 3rd ch of tch, turn.

**Row 7:** Ch 3 (counts as hdc, ch 1), [sc in next ch-1 sp, ch 3] twice, \*BPtr around next 2 dc, ch 2, BPtr around next 2 dc, ch 3, sk 2 ch-1 sps\*\*, [sc in next ch-1 sp, ch 3] 4 times; rep from \* across to last 2 ch-1 sps ending at \*\*, sc in next ch-1 sp, ch 3, sc in 4th ch of tch, ch 1, hdc in 3rd ch of tch, turn.

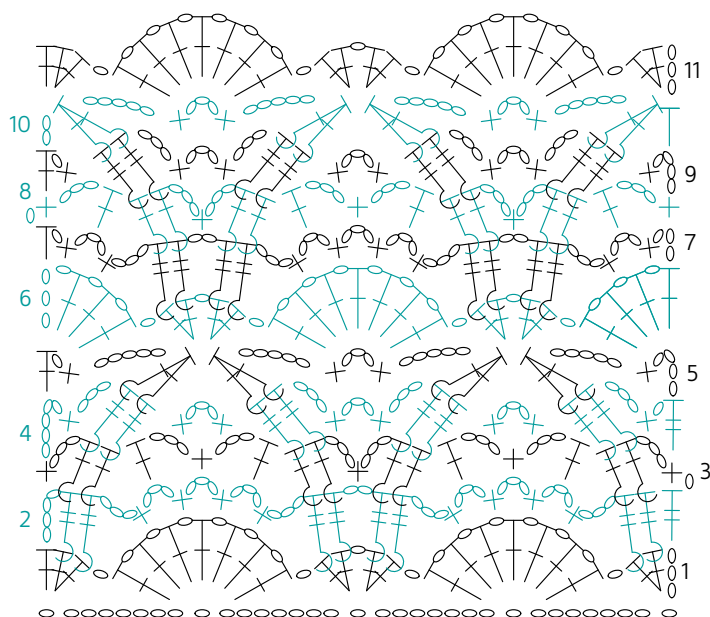
**Row 8:** Ch 1, sc in hdc, \*ch 3, dc in next ch-3 sp, FPdc around next 2 tr, ch 3, sc in next ch-2 sp, ch 3, FPdc around next 2 tr, sk next ch-3 sp, dc in next ch-3 sp, ch 3, sc in next ch-3 sp; rep from \* across, turn.

**Row 9:** Ch 4 (counts as dc, ch-1 sp), \*sc in next ch-3 sp, BPtr around next 2 dc, [ch 3, sc in next ch-3 sp] twice ch 3, BPtr around next 2 dc, sc in next ch-3 sp\*\*, ch 3; rep from \* across to last ch-3 sp ending at \*\*, ch 1, dc in last sc, turn.

**Row 10:** Ch 2 (counts as hdc), \*FPdc2tog over next 2 tr, ch 5, sk next ch-3 sp, (sc, ch 3, sc) in next ch-3 sp, ch 5, FPdc2tog over next 2 tr; rep from \* across to tch, hdc in 3rd ch of tch, turn.

**Row 11:** Ch 3 (counts as dc), 2 dc in hdc, \*ch 1, sh in next ch-3 sp, ch 1\*\*, (2 dc, ch 1, 2 dc) in space between next 2 FPdc2tog; rep from \* across to tch, 3 dc in top of tch, turn.

Rep Rows 2-11 to desired length.



Lisbon Stitch Pattern

