



Foxglove Wrap

Robyn Chachula

*Originally published in
Interweave Crochet,
Fall 2013*

Harper Point Photography

Foxglove Wrap originally published in *Interweave Crochet*, Fall 2013.

©F+W Media, Inc. All rights reserved. F+W Media grants permission for any or all pages in this issue to be copied for personal use.

 INTERWEAVE™ publishers of *Interweave Crochet* magazine...join the online crochet community at crochetme.com



Foxglove Wrap

Robyn Chachula

FAIR AMOUNT OF FOCUS REQUIRED.

Involved stitch patterns, shaping, or assembly require fairly constant concentration.

Getting Started

FINISHED SIZE 55" long by 12" wide.

YARN Green Mountain Spinnery Alpaca Elegance (50% New England alpaca, 50% fine wool; 180 yd [165 m]/2 oz [58 g]; **(33)**): #7565 hibiscus, 4 hanks.

HOOK Size 7 (4.5 mm). Adjust hook size if necessary to obtain correct gauge.

NOTIONS Blocking pins; spray bottle; yarn needle.

GAUGE 2 patt reps by 8 rows = 4¼" square.

Notes

Main panel of wrap is worked from end to end. Yarn is joined to work edge after wrap panel is complete.

Stitch Guide

Shell (sh): (3 dc, ch 1, 3 dc) in ch-sp indicated.

Pattern

Ch 46.

Row 1: (WS) 3 dc in 5th ch from hook, *sk next 3 ch, dc in next ch, ch 1, sk next ch, dc in next ch, sk 3 ch**, sh in next ch; rep from * across ending last rep at **, 3 dc in next ch, ch 1, dc in last ch, turn—8 ch-1 sps, 16 dc, 3 sh.

Row 2: Ch 4, 3 dc in first ch-1 sp, *sk 3 dc, FPdc (see page 3) around next dc, ch 1, FPdc around next dc**, sh in next ch-1 sp; rep from * across ending last rep at **, 3 dc around 4th ch of tch, ch 1, dc in 3rd ch of tch, turn.

Row 3: Ch 4, dc in first ch-1 sp, *sk next 3 dc, BPdc (see page 3) around next st, (2 dc, ch 1, 2 dc) in next ch-1 sp, BPdc around next st, (dc, ch 1, dc) in next ch-1 sp; rep from * across, turn.

Row 4: Ch 4, *sk next ch-1 sp and next dc, FPdc around next dc, sh in next ch-1 sp, sk next 2 dc, FPdc around next dc, ch 1; rep from * across to tch, dc in 3rd ch of tch, turn.

Row 5: Ch 4, sk first dc, BPdc around next dc, *sh in next ch-1 sp, sk next 3 dc, BPdc around next st, ch 1**, BPdc around next st; rep from * across ending last rep at **, dc in 3rd ch of tch, turn.

Row 6: Ch 4, 2 dc in first ch-1 sp, FPdc around next dc, *(dc, ch 1, dc) in next ch-1 sp, sk next 3 dc, FPdc around next dc**, (2 dc, ch 1, 2 dc) in next ch-1 sp, FPdc around next dc; rep from * across ending last rep at **, 2 dc around 4th ch of tch, ch 1, dc in 3rd ch of tch, turn.

Row 7: Ch 4, 3 dc in ch-1 sp, *sk 2 dc, BPdc around next dc, ch 1, sk next 2 dc, BPdc around next dc**, sh in next ch-1 sp; rep from * across ending last rep at **, 3 dc around 4th ch of tch, ch 1, dc in 3rd ch of tch, turn.

Rep Rows 2–7 fourteen times; rep Rows 2–3. Fasten off.

Edging:

With RS facing and working across short edge, join yarn with sl st to short edge at corner.

Rnd 1: (RS) Ch 1, *3 sc in corner, work 33 sc evenly spaced along short edge, 3 sc in next corner, work 213 sc evenly spaced along long edge; rep from * around; sl st in first sc to join, turn—504 sc.

Rnd 2: Ch 3 (counts as dc), *dc in each sc to center sc of corner, 5 dc in center sc; rep from * around, sl st in top of tch to join, turn—520 dc.

Rnd 3: Ch 3 (counts as dc), dc in next 2 dc, *(FPdc, ch 2, FPdc) around next dc, dc in next 3 dc, [sk 1 dc, (FPdc, ch 1, FPdc) around next dc, sk 1 dc, dc in next 3 dc] to last 6 dc before center dc of corner, sk 1 dc, (FPdc, ch 1, FPdc) around next dc, sk next dc**, dc in next 3 dc; rep from * around ending last rep at **, sl st in top of tch to join, turn.

Rnd 4: Ch 2, *BPdc around next dc, 4 dc in ch-1 sp, BPdc around next dc, sk next dc, dc in next dc, sk next dc] to within one st of next corner ch-2 sp, BPdc around next dc, 6 dc in ch-2 sp, BPdc around next dc, sk next dc, dc in next dc, sk next dc; rep from * around, sl st in first BPdc to join, turn.

Rnd 5: Ch 2, *sk next dc, FPdc around next st, (sc, ch 2) in next 5 dc, sc in next dc, FPdc around next st, [sk next dc, FPdc around next st, (sc, ch 2) in next 3 dc, sc in next dc, FPdc around next dc] to corner; rep from * around, sl st in first FPdc to join.

FINISHING

Fasten off. Weave in ends. Pin to size. Spray with water and allow to dry. ❁



BACK POST DOUBLE CROCHET (BPDC)

Yarn over, insert hook from back to front to back around the post of corresponding stitch below, yarn over and pull up loop, yarn over and draw through all three loops on hook..

FRONT POST DOUBLE CROCHET (FPDC)

Yarn over, insert hook from front to back to front around post of stitch to be worked, yarn over and pull up loop [yarn over and draw through 2 loops on hook] 2 times.

Abbreviations

| | | | | | |
|-------------------|------------------------------------|-------------------|------------------------------------|--------------|---|
| beg | begin(s); beginning | inc(s)('d) | increase(s); increasing; increased | sl st | slip(ped) stitch |
| bet | between | k | knit | sp(s) | space(es) |
| blo | back loop only | lp(s) | loop(s) | st(s) | stitch(es) |
| CC | contrasting color | MC | main color | tch | turning chain |
| ch | chain | m | marker | tog | together |
| cm | centimeter(s) | mm | millimeter(s) | tr | treble crochet |
| cont | continue(s); continuing | patt(s) | pattern(s) | WS | wrong side |
| dc | double crochet | pm | place marker | yd | yard |
| dtr | double treble crochet | p | purl | yo | yarn over hook |
| dec(s)('d) | decrease(s); decreasing; decreased | rem | remain(s); remaining | * | repeat starting point |
| est | established | rep | repeat; repeating | () | alternate measurements and/or instructions |
| fdc | foundation double crochet | rev sc | reverse single crochet | [] | work bracketed instructions a specified number of times |
| flo | front loop only | rnd(s) | round(s) | | |
| foll | follows; following | RS | right side | | |
| fsc | foundation single crochet | sc | single crochet | | |
| g | gram(s) | sk | skip | | |
| hdc | half double crochet | sl | slip | | |



○ = chain (ch)

● = slip st

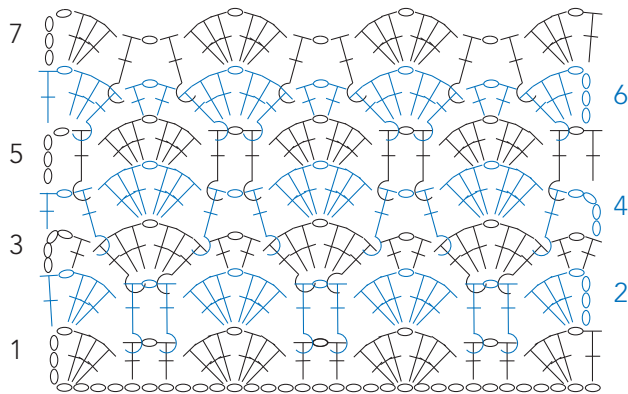
X = single crochet (sc)

⊥ = double crochet (dc)

⌋ = Front Post
double crochet (FPdc)

⌋ = Back Post
double crochet (BPdc)

Foxglove pattern



Foxglove edging

