

# "Cozy Cowl"



*a Girly Knits pattern*

*by Lauren Riker*

Let your cable work keep you warm this Winter with this adorable cable knit cowl! Knit with extra soft bulky weight yarn, this cowl not only knits up quick, it's extra thick and cozy too! This super cute cowl features 3 different types of cables that are tons of fun to knit including a horse-shoe cable, a traveling cable, and a braided cable. The twists and turns of these cables will keep you engaged with your knitting and are a joy to watch take form. Knit as a simple rectangle, all you will need to do to finish your cowl is a single seam, and you are ready to cozy up with it. Enjoy! ♥ Lauren

## Difficulty:

Intermediate

## Size:

One Size

## Finished Measurements:

Circumference: 25"

Width: 10.5"

## Gauge:

13 sts and 19 rows = 4" in Stockinette Stitch

To save time, take time to check gauge! ☺

## Materials:

- ♥ US 10.5 (6.5mm) 14" straight needles
- ♥ Lion Brand Lion's Pride Woolspun (bulky weight; 80% acrylic, 20% wool; 127yd/116m per 100g skein): 2 skeins Oxford Grey #150
- ♥ Stitch markers
- ♥ Tapestry needle
- ♥ Cable needle

## Abbreviations:

- ♥ **BO:** bind off
- ♥ **cn:** cable needle
- ♥ **CO:** cast on
- ♥ **cont:** continue
- ♥ **k:** knit
- ♥ **LH:** left hand
- ♥ **p:** purl
- ♥ **patt:** pattern
- ♥ **pm:** place marker
- ♥ **rep(s):** repeat(s)
- ♥ **RS:** right side
- ♥ **st(s):** stitch(es)
- ♥ **WS:** wrong side



### Cable Abbreviations:

- ♥ **T3F:** Slip 2 sts onto cn and hold in front, p1, k2 from cn
- ♥ **T3B:** Slip 1 st onto cn and hold in back, k2, p1 from cn
- ♥ **C4F:** Slip 2 sts onto cn and hold in front, k2, k2 from cn
- ♥ **C4B:** Slip 2 sts onto cn and hold in back, k2, k2 from cn

### Cable Pattern Written:

Row 1 (WS): K5, p8, k2, p2, k8, p2, k2, p6, k5.

Row 2 (RS): K3, p2, C4B, k2, p2, T3F, p6, T3B, p2, k8, p2, k3.

Row 3: K5, p8, k3, p2, k6, p2, k3, p6, k5.

Row 4: K3, p2, k6, p3, T3F, p4, T3B, p3, C4B, C4F, p2, k3.

Row 5: K5, p8, k4, p2, k4, p2, k4, p6, k5.

Row 6: K3, p2, k2, C4F, p4, T3F, p2, T3B, p4, k8, p2, k3.

Row 7: K5, p8, k5, p2, k2, p2, k5, p6, k5.

Row 8: K3, p2, k6, p5, T3F, T3B, p5, k8, p2, k3.

**Row 9:** K5, p8, k6, p4, k6, p6, k5.

Row 10: K3, p2, C4B, k2, p6, C4F, p6, C4B, C4F, p2, k3.

Row 11: Rep Row 9.

Row 12: K3, p2, k6, p6, k4, p6, k8, p2, k3.

Row 13: Rep Row 9.

Row 14: K3, p2, k2, C4F, p6, C4F, p6, k8, p2, k3.

Row 15: Rep Row 9.

Row 16: K3, p2, k6, p5, T3B, T3F, p5, C4B, C4F, p2, k3.

Row 17: K5, p8, k5, p2, k2, p2, k5, p6, k5.

Row 18: K3, p2, C4B, k2, p4, T3B, p2, T3F, p4, k8, p2, k3.

Row 19: K5, p8, k4, p2, k4, p2, k4, p6, k5.

Row 20: K3, p2, k6, p3, T3B, p4, T3F, p3, k8, p2, k3.

Row 21: K5, p8, k3, p2, k6, p2, k3, p6, k5.

Row 22: K3, p2, k2, C4F, p2, T3B, p6, T3F, p2, C4B, C4F, p2, k3.

Row 23: K5, p8, k2, p2, k8, p2, k2, p6, k5.

Row 24: K3, p2, k6, p2, k2, p8, k2, p2, k8, p2, k3.

Rep Rows 1-24 for Cable patt.

### Cable Pattern Charted:

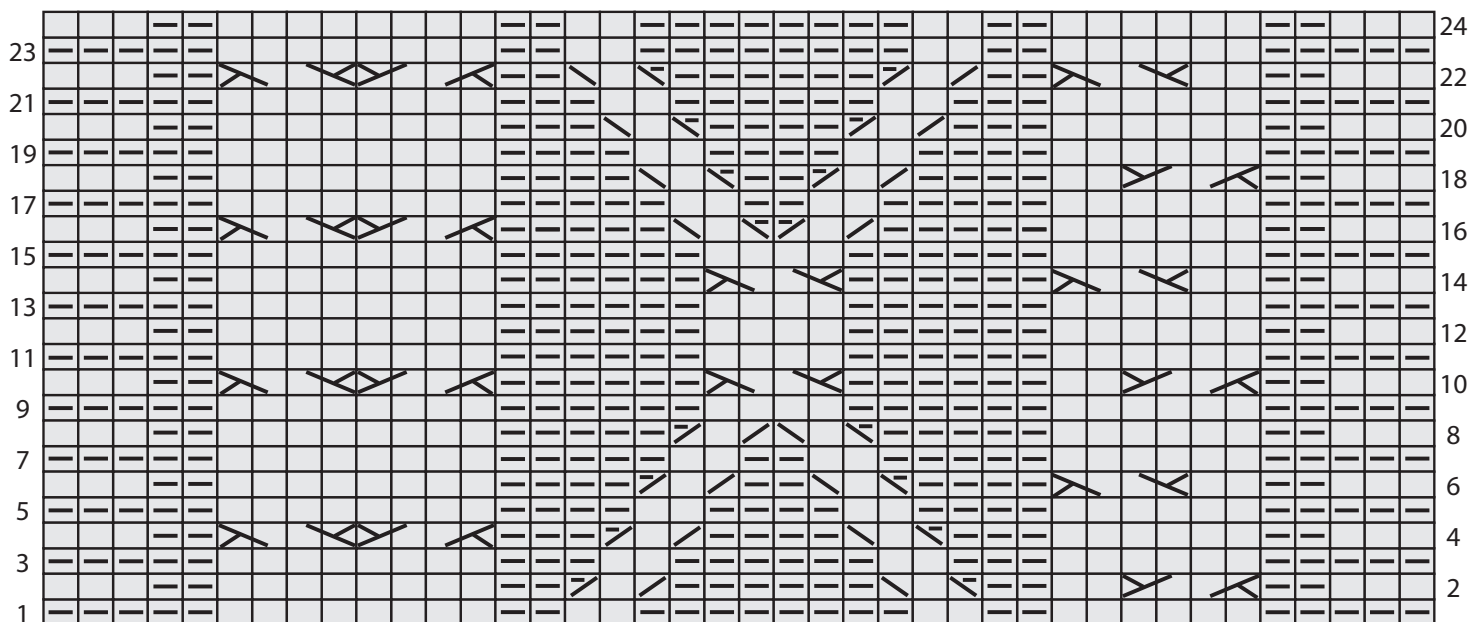


Chart starts at bottom on Row 1. Read chart from right to left on RS. Read chart left to right on WS.

- |                    |       |       |
|--------------------|-------|-------|
| = K on RS, P on WS | = T3F | = C4B |
| = P on RS, K on WS | = T3B | = C4F |



**Directions:** *It's time to knit super cool cables, woohoo!*

### ♥ COWL ♥

Using a long tail cast on and leaving a 36" tail, CO 40 sts.

Work Rows 1-24 of Cable patt 5 times, working the very first row as follows to place markers, and ending after working Row 23 of the 5th repeat of patt:

Row 1 (to place markers): K3, pm, k2, p8, k2, pm, p2, k8, p2, pm, k2, p6, k2, pm, k3.

BO in knit. Break yarn leaving a 36" tail for seaming.

### Finishing:

**Note:** You may want to wet block your cowl before seaming it together (see "How to Wet Block" below).

**Seam Cowl:** Align CO edge and BO edge with RS facing out and CO edge on bottom. Using a tapestry needle and BO tail, seam cowl by drawing yarn through first upside down "V" of first row, then through first rightside up "V" of bind off row (shown below). Repeat these 2 steps seaming cowl from right to left, adjusting tension to match knitting. Secure end.



Weave in all ends.

### ♥ HOW TO WET BLOCK ♥

- 1) Fill a bowl or bucket large enough to fit cowl with warm water.
- 2) Place cowl in water and let sit for 15 minutes, or until cowl is thoroughly wet.
- 3) Dump out water and gently remove excess water from cowl by pressing cowl against bowl. Try to remove water without stretching it or wringing it out.
- 4) Spread out cowl flat on a towel, and roll up in towel. Step on towel to remove excess water.
- 5) Lay cowl on a blocking board or flat surface that you can pin into (like a mattress) with cables facing up.

6) Spread out cowl to finished measurements, and pin edges. You can sculpt the cables if you wish (see photo below to see my cowl on a blocking board).

7) Leave to dry until completely dry.



Here is my cowl drying, I pinned it along the edges every few inches!

*I hope you  
love your new cable  
knit cowl!*



### Information:

If you have any questions, comments, or suggestions, please e-mail [girlyknits@gmail.com](mailto:girlyknits@gmail.com). Please send me a picture of your finished project or post it on Ravelry!

### Copyright:

© Copyright 2015, Girly Knits. All rights reserved. This pattern is for personal non-commercial use only. No part of this pattern may be copied, reproduced, or sold in any format. Items from this pattern are not to be sold commercially.

### ♥ ABOUT LAUREN ♥

Lauren has been knitting since she was 9, and working in New York City as a fashion designer for juniors and girls since 2005. She loves kittens, everything girly, and purple! You can find more of her patterns at [girlyknits.com](http://girlyknits.com), like her facebook fanpage at [facebook.com/girlyknits](https://facebook.com/girlyknits), and read her blog at [knittingisawesome.com](http://knittingisawesome.com).