

Calculations:

Motif size: [A] _____ stitches x [B] _____ rows
(rounds)

Gauge: [C] _____ stitches = 1"
[D] _____ rounds = 1"

Motif width: [A] _____ ÷ [C] _____ =
[E] _____ "

Desired cowl size: [F] _____ inches
(circumference) x [G] _____ inches (height)
Note: Height does not include 2" *edge trim*

Desired cast on: [F] _____ x [C] _____ =
[H] _____ stitches

Fit the Motif:

Number of pattern repeats: [H] _____ ÷
[A] _____ = [I] _____

Round [I] up or down to a whole number:
Number of actual repeats: [J] _____

Actual pattern stitch count: [J] _____ x
[A] _____ = [K] _____

Cast On number needs to be divisible by
Trim Stitch repeat [L]. Choose one:

Pattern	Repeat
1x1 Rib	2
Seed Stitch	2
K2 P1 Rib	3
2 x 2 Rib	4

[K] _____ ÷ Trim Stitch repeat [L] _____ =
[M] _____ remainder of: _____ (round
remainder up to next whole number [N]
_____)

Cast on: [K] _____ - [N] _____ = [O] _____



Cowl Height Calculation

Estimated # rounds in cowl body:
[G] _____ x [D] _____ = [P] _____

Vertical repeats: [P] _____ ÷ [B] _____ =
Vertical repeats _____ (round to nearest
whole number: [R] _____)

Finished Circumference:
[O] _____ ÷ [C] _____ = [S] _____

Finished height: ([R x B] _____ ÷ [D] _____) +
[Q] _____ = [T] _____

A: Motif # stitches	
B: Motif # rows	
C: Stitches per inch	
D: Rounds per inch	
E: Motif width	
F: Desired cowl circumference	
G: Desired cowl body height (not including trim height)	
H: # Desired cast on stitches	
I: # Pattern repeats around cowl for desired size	
J: # Pattern repeats around cowl (rounded)	
K: Pattern stitch count	
L: Trim stitch repeat	
M: # Edge repeats	
N: Remaining stitches	
O: Cast on number	
P: estimated # rounds in cowl	
Q: Trim height	
R: # Vertical repeats	
S: Final circumference	
T: Finished height	

Pattern:

Note: Any number of colors could be used for your stranded (Fair Isle) cowl. In this sample pattern we focus on using just two, but know that the chart could be colored (like we did in the workshop) to indicate the use of different colors. Remember, changing colors every round creates a “step” at the seam.

Needle Sizes: _____
(Swatch) | (1 size smaller)

Color A (C1): _____

Color B (C2): _____

Notions: Stitch Marker, Tape Measure, Tapestry Needle

With smaller needles and C1, cast on [O] _____ stitches. Join in round, being careful not to twist. PM to indicate beg of round. Work in edge stitch for [D] _____ rounds (1 inch). Increase [N] _____ stitches in last round.

Change to larger needles

K one round

Begin chart:

Reading chart from right to left, and beginning with line 1, repeat row [J] _____ times to end of round. Continue as established, repeating chart a total of [R] _____ times.

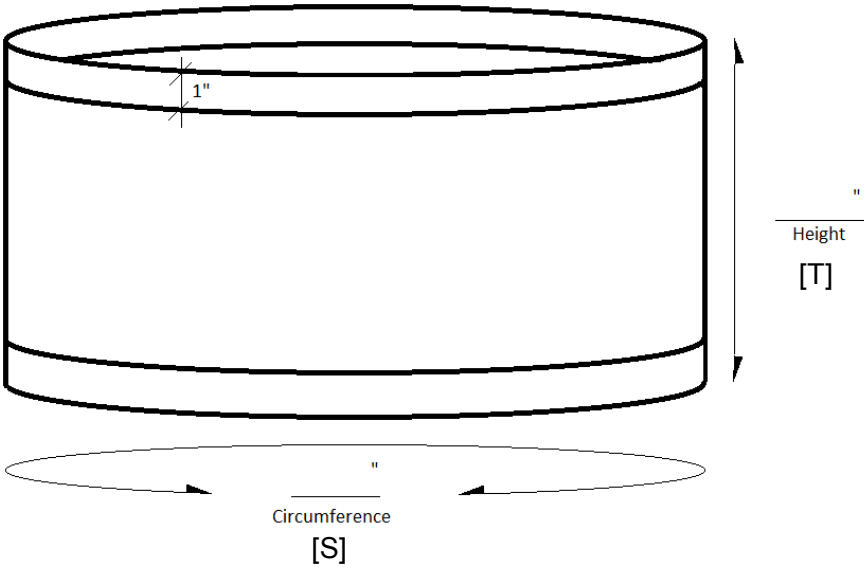
K 2 rounds, decreasing [N] _____ stitches in second round.

Change to smaller needles.

Work in edge stitch for [D] _____ rounds (1 inch).

Bind off in pattern.

<p>Stranding (Fair Isle)</p> <p>Usually no more than 2 colors per row/round</p> <p>No more than 7 stitches between color changes (or locking floats)</p> <p>Visible floats on back</p> <p>Pattern is created by alternating two colors per row/round</p> <p>Yarns must be kept in the same order throughout project</p>
--





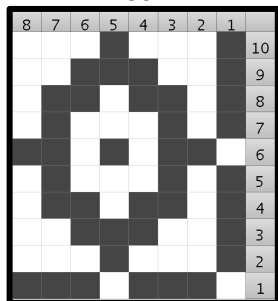
Creating Fair Isle Cowls

Kyle Kunnecke
kkunnecke@kylewilliam.com
www.kylewilliam.com

A motif can be arranged in different ways in order to create engaging patterns. This motif (top left) follows the rules of traditional Fair Isle; no more than 2 colors per row, and no more than 7 stitches between color changes.

Question: The single motif below creates a pattern (bottom left) when repeated. A small change to the layout creates a new design! What should the motif repeat look like for the pattern shown below (bottom right)? Use a pencil to isolate the pattern repeat in the larger design, then recreate the pattern repeat in the empty grid.

Motif A



Add Color: Once the pattern is created, more fun can be had by using different sets of colors in each row. This design is shown using two colors, but it's easy to add variety to the pattern. Remembering no more than 2 colors per row, use colored pencils to try out some color combinations in the two layouts below. Once you decide on colors, it's time to go shopping for yarns to match!

Motif B

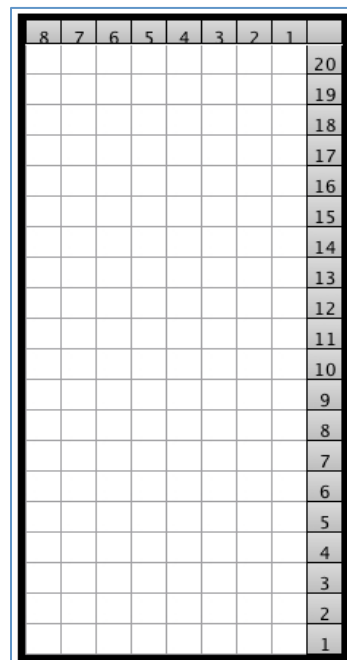


Chart A

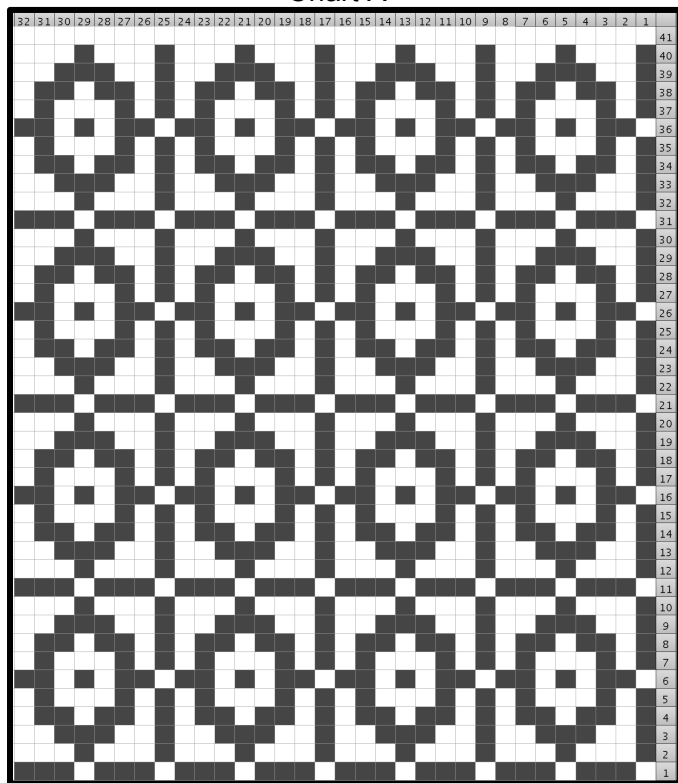


Chart B

