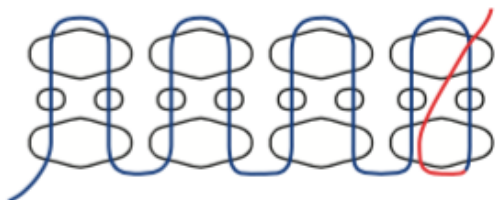
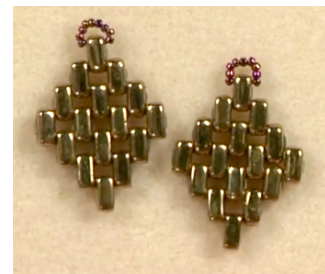




Beading with Shaped Beads

with Melinda Barta

MELINDA'S TOP 5 TIPS



1 Double balancing act

The tapered shape of SuperDuos and Twins creates unique challenges with herringbone stitch. By adding a pair of regular size 15 seed beads between each of the two-hole beads, you can offset the gaps created by the tapered ends. This method creates a firm structure by making the beads stack up better.



2 Keeping file beads in line

Two-holed tile beads can look beautiful in peyote stitch, but they can be unruly and tend to have sharp holes. For best results, keep tight tension, wax and double your thread, and weave through the beads of previous rows to strengthen your work.

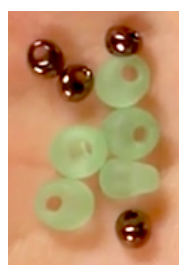


3 Be bold with spikes and gumdrops

When stitching spikes and gumdrops onto flat beadwork, not only will some thread will be exposed, but the beads can easily fall over. To remedy these problems, add a ring of seed beads around the base of the spike. If you want to embellish the edge of the beadwork with spikes, use seed beads to cover the exposed thread.

4 Peanut power

When you string peanut beads, they will click together in an interlocking pattern. However, if you follow a regular peyote stitch path, the beads will align, with the long ends running parallel to each other. The beadwork will form a thick, sturdy structure.



5 Add drama with drops

Glass drop beads can be added to almost any design, and they come in all kinds of variations. Drops can be used to embellish the ends of a design or incorporated inside your bead weaving.

